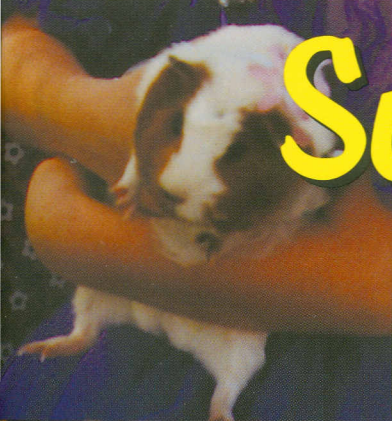


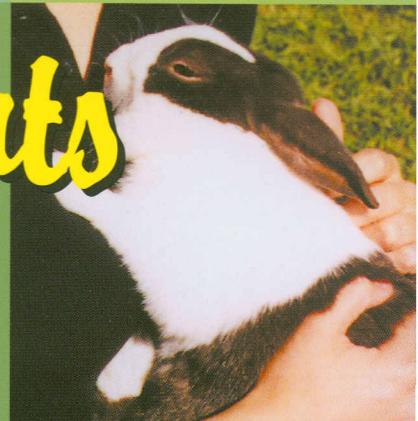
National 4-H Curriculum
BU-06361



Scaling the Heights

Level 3

Pet Project Activity Guide



Name _____

County _____



The Right Fit



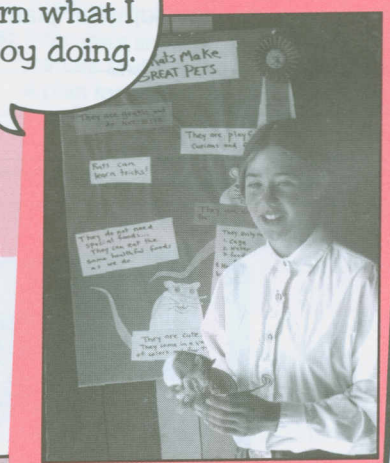
- Life Skill:** Conducting a self-analysis profile
- Pet Project Skill:** Looking at and planning for careers
- Show of Success:** Completes the self-analysis questions.

When you were a small child, you and your friends probably talked about what you wanted to be when you "grew up." Perhaps one wanted to be a fire fighter and another a television star. Someone else wanted to be a teacher. You knew it was a long time before you had to make a real decision. A "long time" is not so far off anymore.

There are many types of careers available, but which will be best for you? The answer depends on a lot of things, but mostly on what you enjoy doing and what you want to make of your life. This activity will help you think about who you are and how you might relate to others in the world of work.

Once you decide what you want to do make the decision to succeed at it. There is a very good chance you'll accomplish what you decide.

4-H has helped me learn what I enjoy doing.

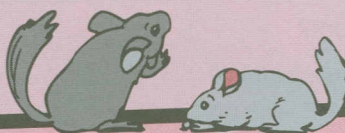


Do the Activity

Discuss each of the following items with your helper or a family member. Then select one career that interests you. With the help of others, complete a profile for that career. You may also use a computer program available in most school counselor offices to analyze your interests.

Who I Am

- Subjects and things I like and why:
- Subjects I don't like and why:
- Things I do when I want to do nothing:
- Things about which I have vision, special feelings or a wealth of information:
- My special skills:
- My health:
- My relationships are strongest with:
 - friends
 - teachers
 - the opposite sex
 - parents
 - adults
- My style:
 - people-oriented
 - things-oriented
 - action-oriented
 - data-oriented
- My employment experience:
- My volunteer and extracurricular activities:
- I am:
 - project-oriented (like projects that have beginnings, middles and ends)
 - maintenance-oriented (like work that is ongoing)
- Amount of time I like to spend with family and friends away from work:



Talk it Over

Share with your helper

- Who did you interview? What answers did they give?
- How did you help your friend make a decision about the type of pet he or she should own?
- What did you learn from listening to your friend's answers?

Tell what's important

Why was it helpful for your friend to be asked these questions before they made a decision about the type of pet to own?

Why is it so easy to be led by "our hearts" instead of "our heads" when making pet decisions? When does this become a problem?

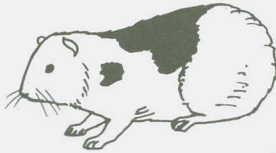
Explore what you learned

Why is it sometimes helpful to talk with someone before you make an important decision?

Imagine what's next

Think of a time you asked someone to help you make a decision. Why did you ask that person to help?

Guinea Pigs



Know Your Pets

Cavies (Guinea Pigs)

These loveable, popular rodents are native to South America where they live wild in the mountains of Chile. They are affectionate, social animals that prefer to be kept in pairs.

Breeds: American, Abyssinian, Peruvian, White Crested, Teddy and Silkie. The Cavy Standard of Perfection listed on page 36 gives complete information on the ideal type, fur, color, markings and condition for all breeds.

Housing: Cavies prefer a clean, safe, dry cage in a well-ventilated but not drafty area with a temperature between 60 and 80 degrees F. At least 100 square inches of floor area per adult is recommended. Bedding must be clean, nontoxic, absorbent, relatively dust-free and easy to replace. Shredded paper, wood shavings and processed corn cobs are preferred bedding materials. A hiding place should be included.

Diet: Commercial pellets and a source of vitamin C such as small amounts of orange pulp, potato skins or lettuce to prevent hair loss and scurvy are preferred. Fresh, clean water must be readily available at all times.

Health: The enclosure and all cage "furniture" should be cleaned and disinfected once weekly. Food and water containers should be cleaned and disinfected once daily.

Breeding: If animals are bred the first breeding should only occur between three and seven months of age. Pregnancy lasts an average of 63-68 days.



Challenges

1. Visit an animal shelter and observe the adoption interview and process.
2. Make a list of resources you would recommend for someone who has decided to get a certain kind of pet.
3. What would it really be like to have a pet you need to care for each day. Set up an area in your home with a small box containing a toy stuffed animal. Each day, pretend to feed it, give it fresh "water" and play with it. Keep a record of your activity for one week. After that time, review what you did. Were you able to take care of your "et" each day? How much time did it take? Review this before you decide to obtain a real pet.

Pet Facts

Healthy Pets

Hygiene and health are important to both you and your pet. This means cleanliness, hand washing after every handling, no kissing, keeping pets that can injure each other apart and always providing a place for every pet to feel secure.